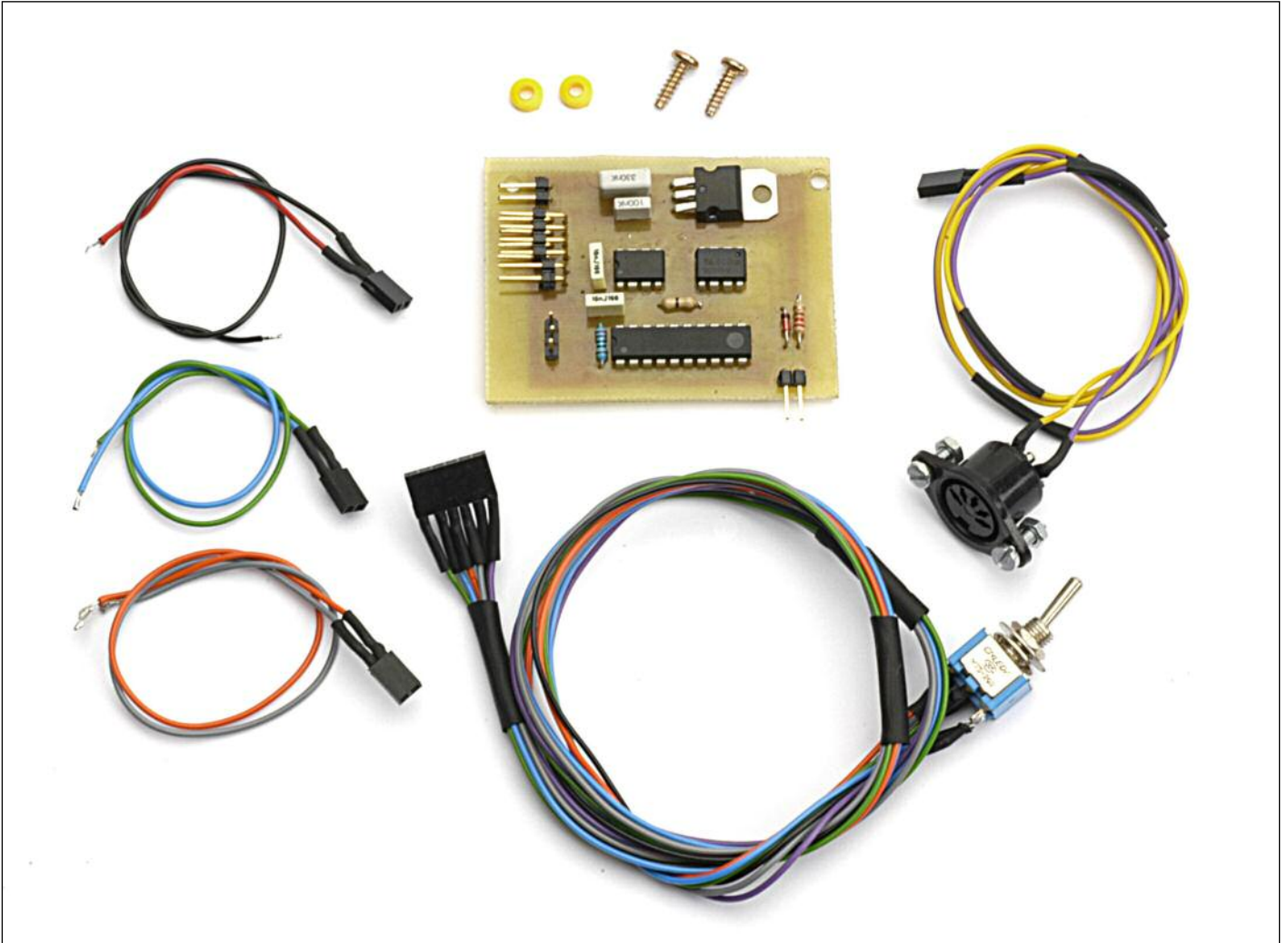


# PDX-2000 MIDI MOD



**I'm not be responsible in any way if you damage your turntable during the installation!**

**This mod will void your warranty.**

This mod requires some knowhow about soldering.  
If you have no experience with soldering and electronics please ask someone who does to do the mod.

Contact me at [backtrack@yokodjs.se](mailto:backtrack@yokodjs.se) with any questions.

All PCBs have been tested before shipping.

1



1. Remove the ultrapitch fader knob.

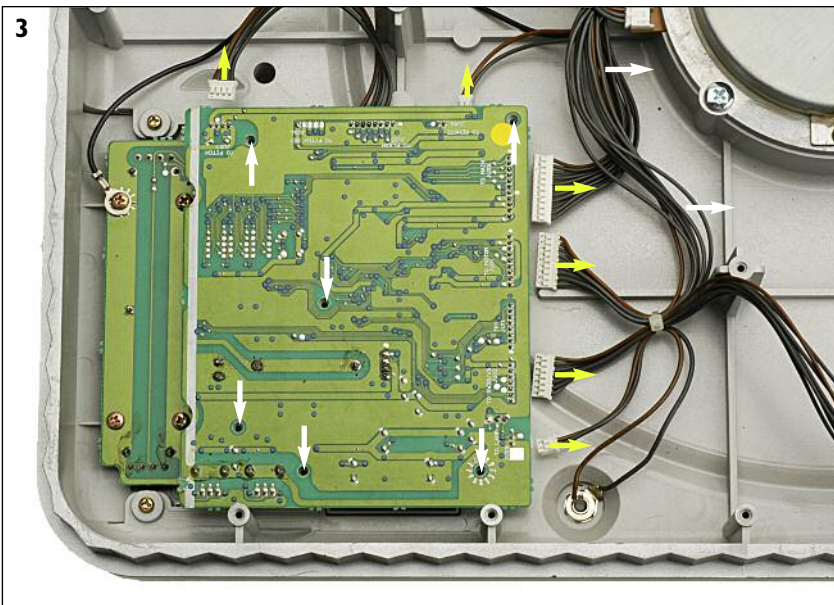
2



2. Flip over your turntable. If you don't have anything good to support it with use beer-cans at the corners.

Remove the 15 screws and pull away the baseplate.

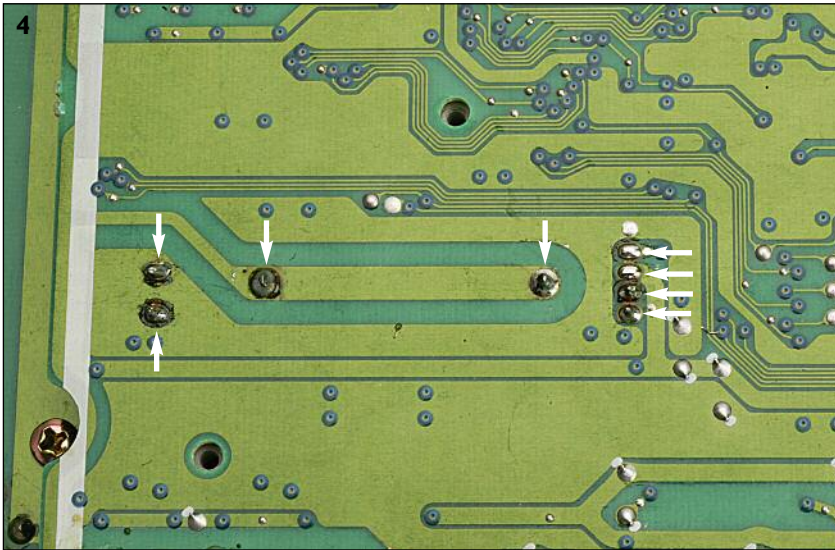
3



3. Disconnect all cables going to the pitch-PCB.

Remove the screws and remove the PCB.



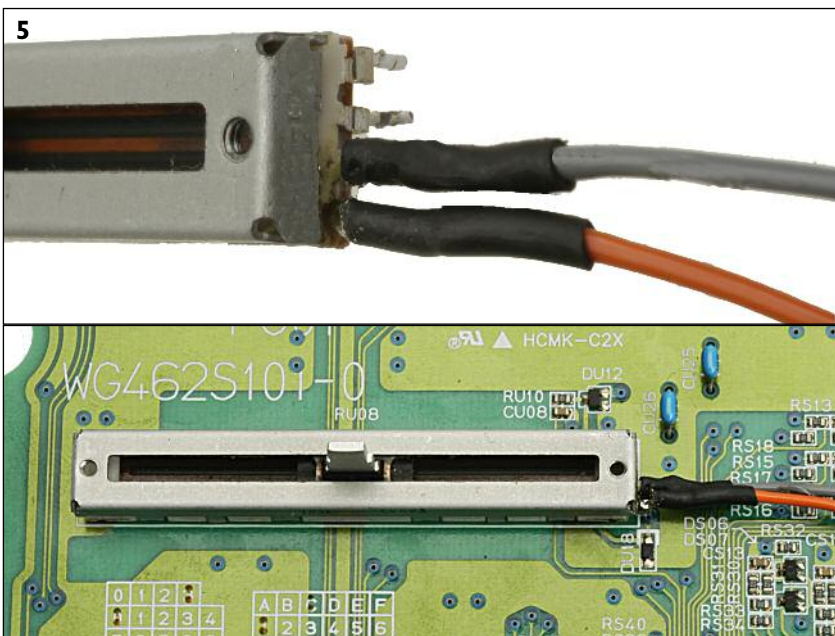


4. Here comes the tricky part. Use the included desoldering braid and remove the solder on the points marked in the picture. (See here how to use: <http://www.youtube.com/watch?v=Acb ezX8TrOU>).

If you have a desoldering pump use that. Its much easier. (Go buy one. Its a good investment.)

If you can't get it free. Heat up the points and pull gently until you can remove the fader.

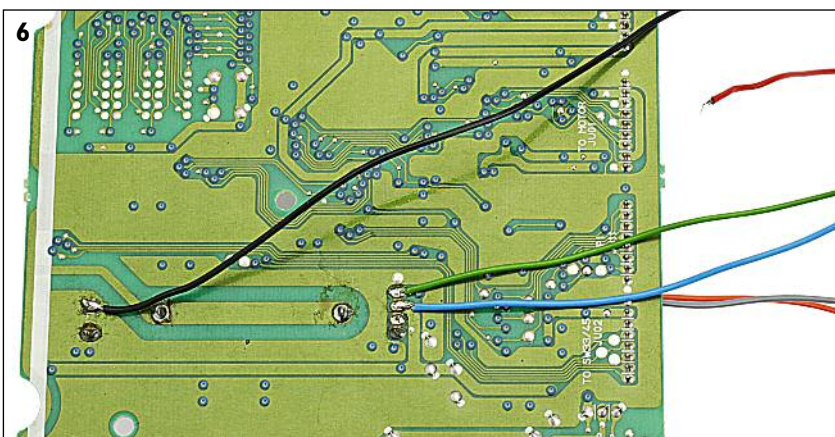
Remove the slidefader.



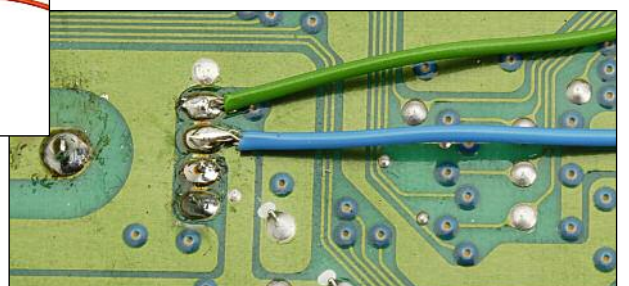
5. Position your fader as shown in the picture and carefully bend the two legs forward.

Solder the wires as shown in the pictures. Use the included shrink tube on the fader pins.

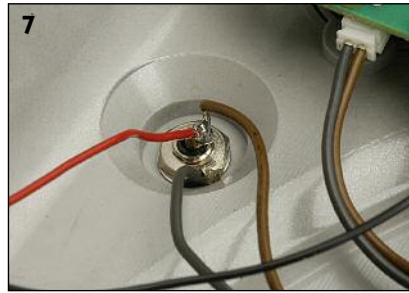
Put the fader back and resolder it to the pitch-PCB.



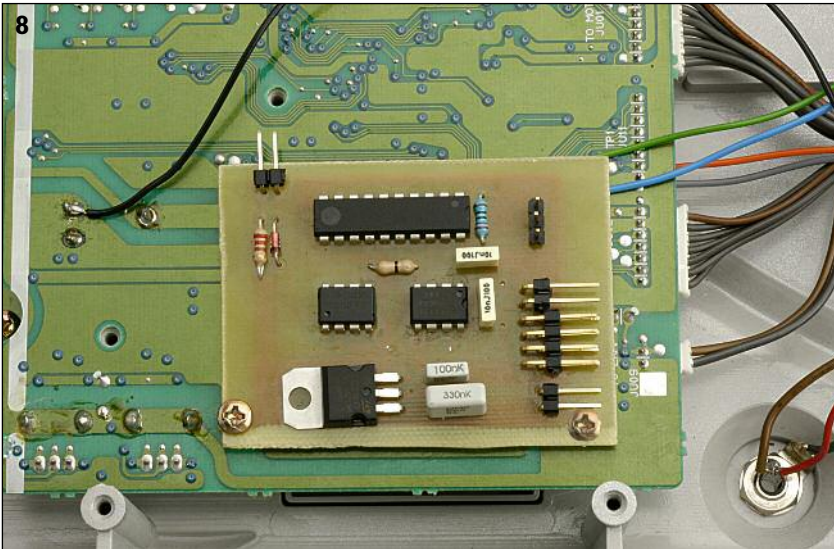
6. Solder the green, blue and black wires as shown in the picture. The red wire is for the next step.



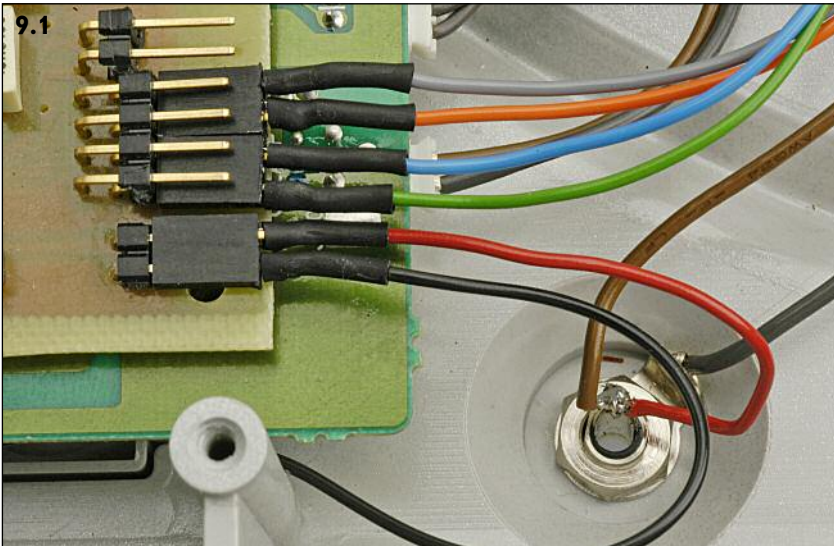




7. Solder the red cable to the positive connector on the lamp socket (where the brown cable already is). Make sure you don't short it to ground.



8. Mount the Mod-PCB on top as shown in the image. Use the included screws and plastic washers.

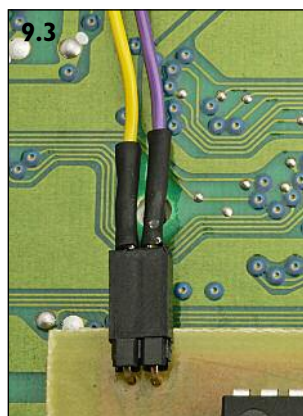
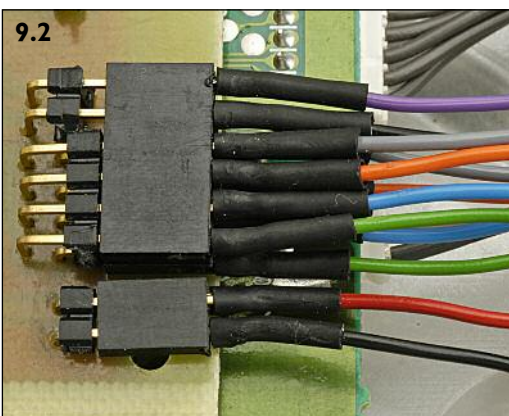


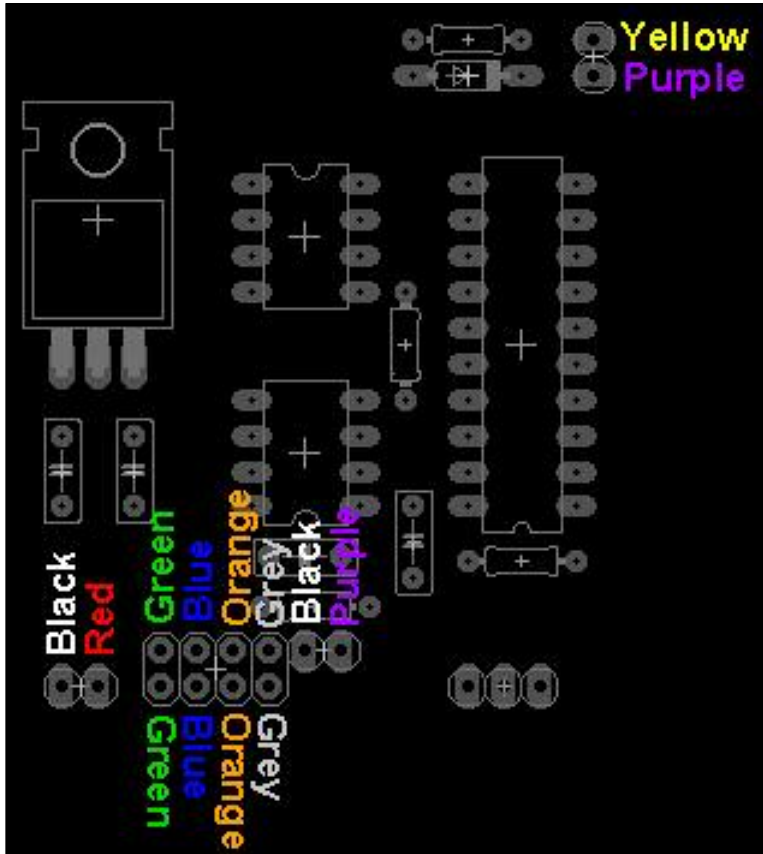
9.1. Connect the cables to the mod-PCB. (The 3 connectors with the 6 cables you just soldered in)

9.2. Connect the switch-cable to the upper row pins on the mod-PCB.

9.3. Connect the MIDI cable to the mod-PCB.

Look at the picture on the next page so you get the cables in the right order. You can damage the Mod-PCB if you put them in the wrong order.





Connection diagram.



10. All that is left to do is to install the switch and the midi connector somewhere. You can put them where you want but the cable lengths are made for installation on the backplate.

Midi connector drill hole is 16mm.  
Switch drill hole is 6 mm.

Quartz lock must be off for the mod to work.